

# THE WESTLYN



Perspectives & Floor Plan are artists impressions only

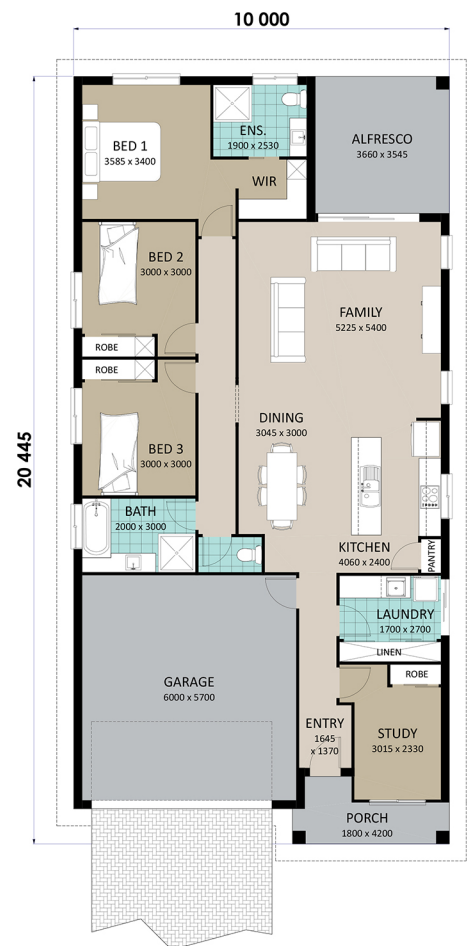


## Home Features

Living Area	180.9m <sup>2</sup>
Porch Area	5.3m <sup>2</sup>
Alfresco Area	13.0m <sup>2</sup>
<b>Total Floor Area</b>	<b>199.2m<sup>2</sup></b>

## Designer Notes:

This three Bedroom, two Bathroom home has been cleverly designed to make the best use of your block. At only 10 metres wide, the Westlyn works well for narrow frontages and compact blocks of land, and still delivers large Bedrooms and a spacious Family Living area. The Bedrooms are tucked away privately from the open plan Living area, and this design also features a Study at the front of the home and a separate Laundry. The large Living area at the rear flows seamlessly to the Outdoor area, providing ample space to relax with family and friends. The whole home flows really well, making for easy and convenient daily living.



**Richard Adams**  
**HOMES** that last a lifetime

© Copyright Richard Adams Homes 2021

QBCC Licence No. 1042241