

THE TOREA



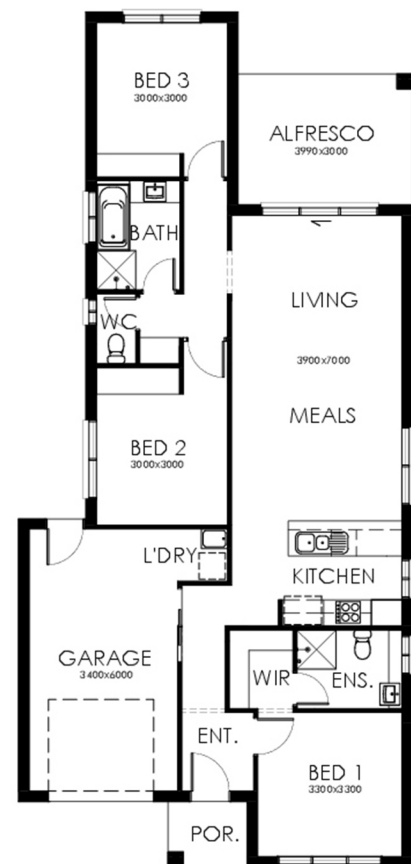
3 | 2 | 1

Home Features

Living Area	133.04m ²
Porch Area	2.71m ²
Alfresco Area	11.97m ²
Total Floor Area	147.72m²

Designer Notes:

Perfectly designed for small blocks, the Torea is a practical house design for a small family, couple, or singles still wanting a 3 Bedroom home. With the Master Suite positioned at the front of the home and the remaining bedrooms sectioned off from the open-plan Kitchen/Meals/Living areas, this clever design still affords space and privacy in its compact plan.



Richard Adams

HOMES that last a lifetime

© Copyright Richard Adams Homes 2021

QBCC Licence No. 1042241