

# THE SHAREENE

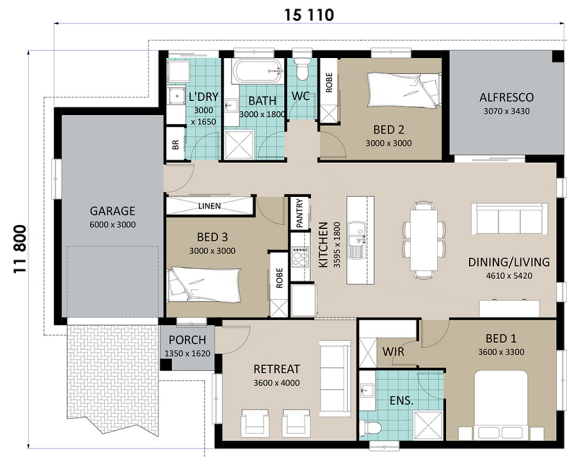


Perspectives & Floor Plan are artists impressions only

3 | 2 | 1

## Home Features

Living Area	145.3m <sup>2</sup>
Porch Area	2.2m <sup>2</sup>
Alfresco Area	10.5m <sup>2</sup>
Total Floor Area	158.0m <sup>2</sup>



## Designer Notes:

A great design for those smaller blocks or a couple who just want a compact home without living in a Multi Dwelling Complex. With three Bedrooms, two separate Living areas and a separate Laundry, this plan works perfectly. A Double Garage can easily be added to this design.

**Richard Adams**  
HOMES that last a lifetime

© Copyright Richard Adams Homes 2021

QBCC Licence No. 1042241