

# THE ROSELLA



Perspectives & Floor Plan are artists impressions only

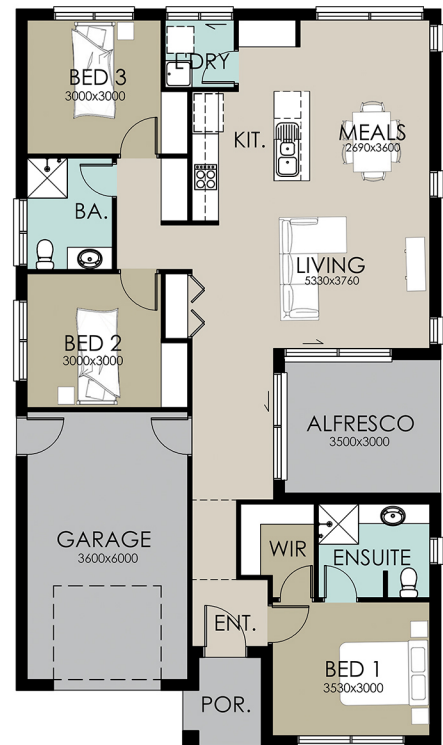


## Home Features

Living Area	114.24m <sup>2</sup>
Porch Area	3.26m <sup>2</sup>
Alfresco Area	10.5m <sup>2</sup>
<b>Total Floor Area</b>	<b>152.13m<sup>2</sup></b>

## Designer Notes:

The Façade of this three Bedroom home hides a creative and extremely functional design with features galore. A delightful Living area with covered Alfresco allows a family to extend their living into the outdoors and the home features extensive storage area for such a compact design.



Width: 9.50m Depth: 16.51m

**Richard Adams**  
**HOMES** that last a lifetime

© Copyright Richard Adams Homes 2021

QBCC Licence No. 1042241