

THE MAIREAD



Perspectives & Floor Plan are artists impressions only

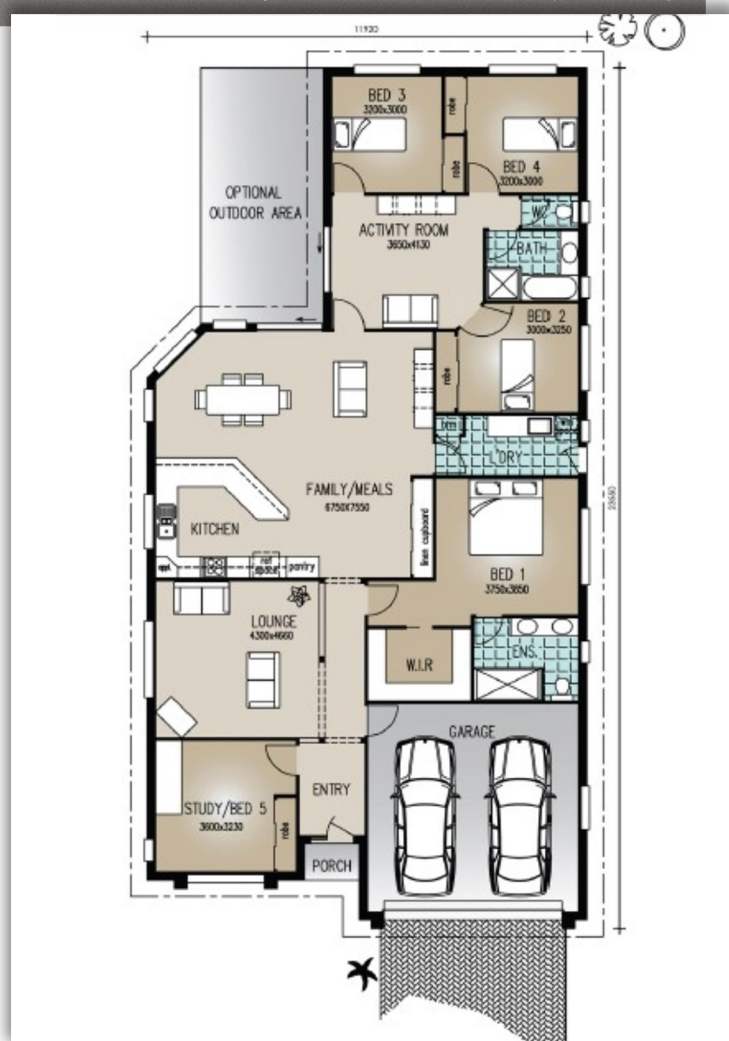
 5 |
  2 |
  2

Home Features

Living Area	235.5m ²
Porch Area	1.5m ²
Total Floor Area	237.0m²
Optional Patio	23.1m ²

Designer Notes:

Another of our five Bedroom designs, this home exudes luxury with its spacious Living and extensive storage. A formal Lounge and large Master Suite with huge Walk-in-Robe ensure the luxury of space for parents and separate areas for children.



Richard Adams
HOMES that last a lifetime

© Copyright Richard Adams Homes 2021

QBCC Licence No. 1042241