

THE LINDSEY II



Perspectives & Floor Plan are artists impressions only

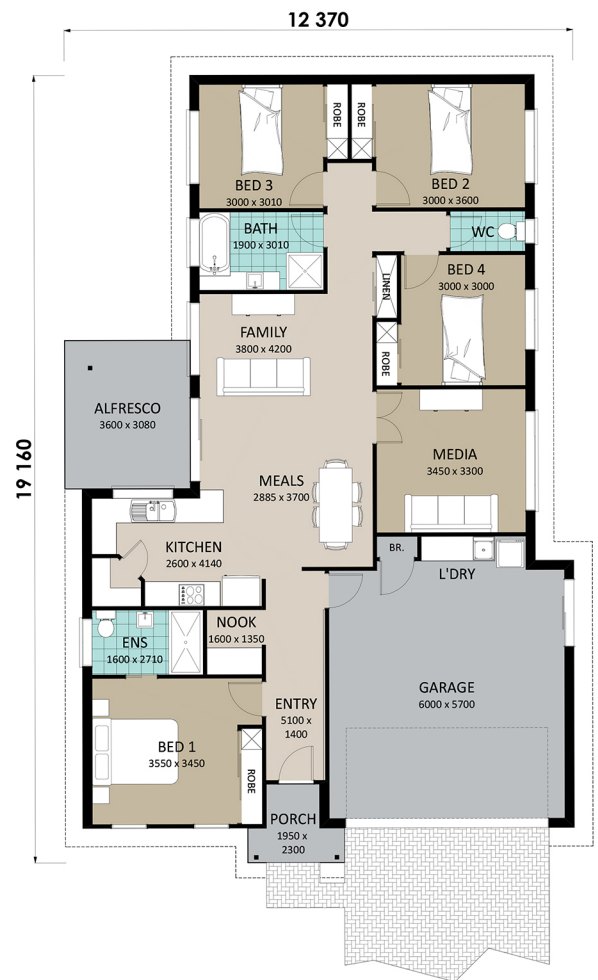
 4 |
  2 |
  2

Home Features

Living Area	178.8m ²
Porch Area	2.8m ²
Alfresco Area	11.1m ²
Total Floor Area	192.7m²

Designer Notes:

This delightful home speaks volumes about the clever use of space in homes - with four Bedrooms and a Computer Nook central to the Family area. It covers all design aspects that modern families want to see - separate Media room and light, airy Living areas compliment this compact home.



Richard Adams
HOMES that last a lifetime

© Copyright Richard Adams Homes 2021

QBCC Licence No. 1042241