

# THE LINDSEY



Perspectives & Floor Plan are artists impressions only

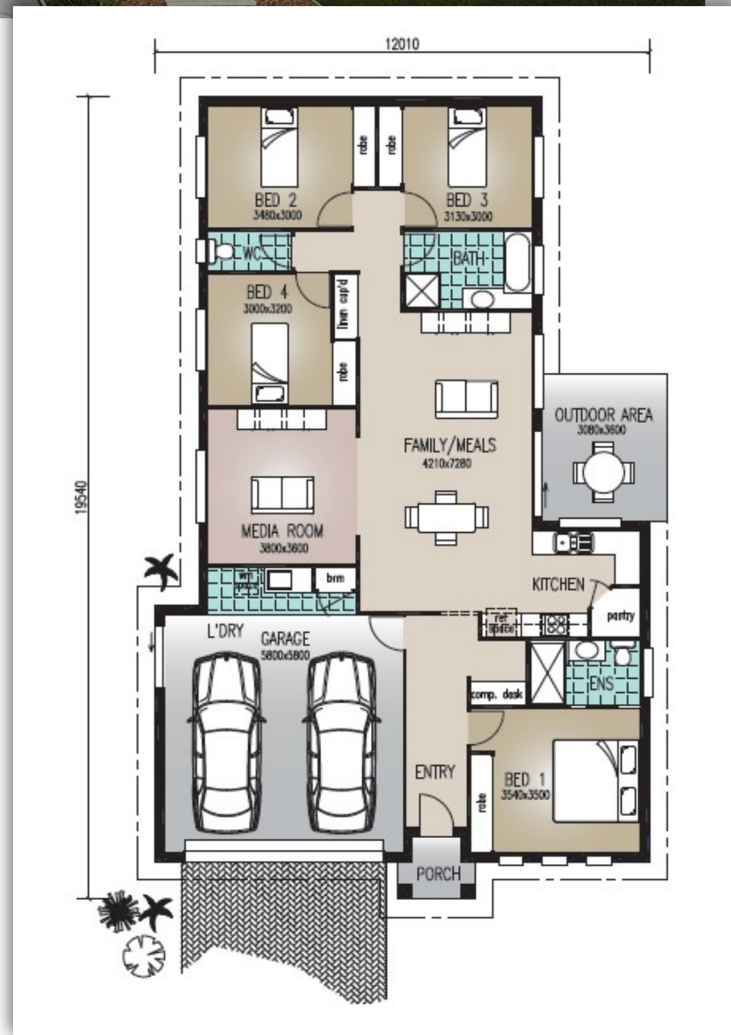
 4 | 
  2 | 
  2

## Home Features

Living Area	182.9m <sup>2</sup>
Outdoor Area	11.1m <sup>2</sup>
Portico Area	2.4m <sup>2</sup>
<b>Total Floor Area</b>	<b>196.4m<sup>2</sup></b>

## Designer Notes:

This delightful home speaks volumes about the clever use of space in homes - with four Bedrooms and a Computer Nook central to the family areas. It covers all design aspects that modern families want to see - separate Media room and light, airy Living areas complement this compact home.



**Richard Adams**  
**HOMES** that last a lifetime

© Copyright Richard Adams Homes 2021

QBCC Licence No. 1042241