

# THE LILLYVALE



Perspectives & Floor Plan are artists impressions only

 3 | 
  2 | 
  2

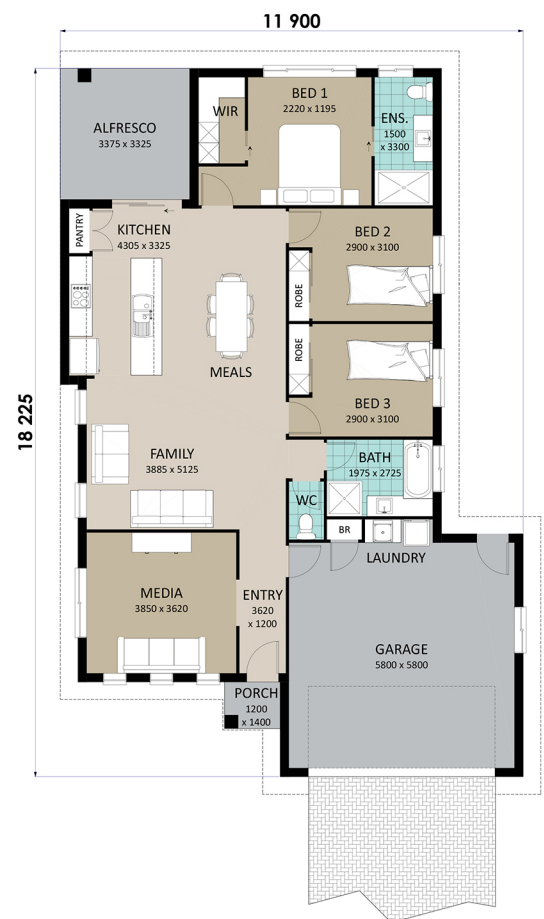
## Home Features

Living Area	163.0m <sup>2</sup>
Porch Area	1.7m <sup>2</sup>
Alfresco Area	11.1m <sup>2</sup>
<b>Total Floor Area</b>	<b>175.8m<sup>2</sup></b>

## Designer Notes:

This great home featuring three Bedrooms boasts a separate Media/Rumpus room for those who enjoy entertaining or just need a room to retreat.

All Bedrooms are well positioned to provide easy access to the large open plan Kitchen, Dining & Family area. With a Double Garage this design is truly a great home.



**Richard Adams**  
**HOMES** that last a lifetime

© Copyright Richard Adams Homes 2021

QBCC Licence No. 1042241