

THE KYLA



Perspectives & Floor Plan are artists impressions only



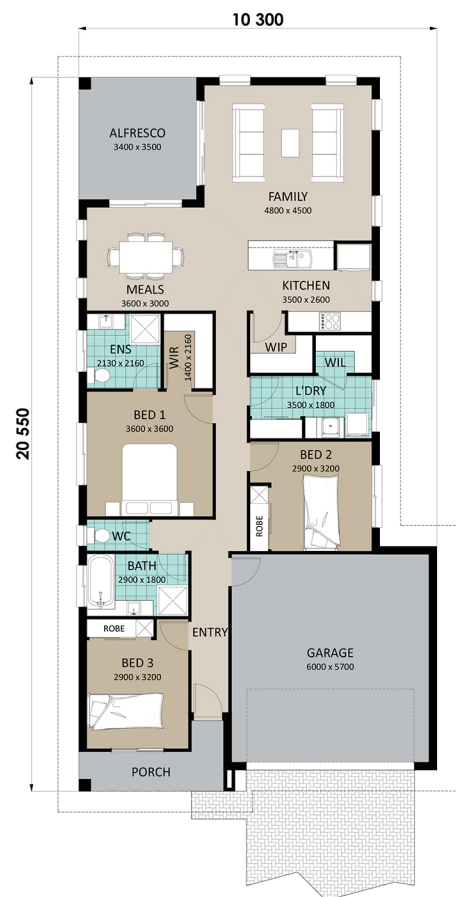
Home Features

Living Area	168.4m ²
Porch Area	5.6m ²
Alfresco Area	11.8m ²
Total Floor Area	185.8m²

Designer Notes:

If cooking is the cornerstone of a truly connected family the large Kitchen with Walk-in-Pantry are most certainly features you will embrace. Along with the generous benchtop space is the smart connected servery.

The Master Bedroom has an exuberance of its own with an Ensuite and walk-in-robe while the second and third Bedrooms boast built-ins. This home is designed for the modern progressive working family with a Double Garage and centrally placed and hidden Laundry and the practicality of a front-of-house porch.



Richard Adams

HOMES that last a lifetime

© Copyright Richard Adams Homes 2021

QBCC Licence No. 1042241