

# THE GOSHAWK



Perspectives & Floor Plan are artists impressions only

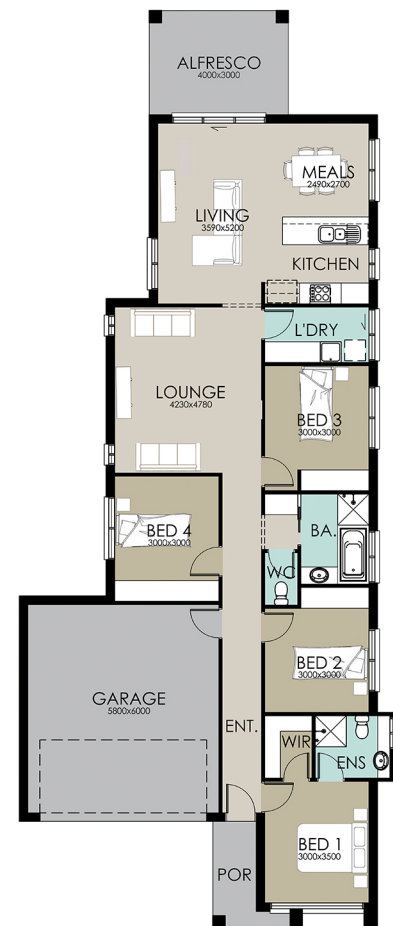


## Home Features

Living Area	142.05m <sup>2</sup>
Porch Area	4.3m <sup>2</sup>
Alfresco Area	12.0m <sup>2</sup>
<b>Total Floor Area</b>	<b>196.71m<sup>2</sup></b>

## Designer Notes:

With all living areas positioned at the back of the home, this design allows for family viewing to the back garden from each aspect. The four Bedrooms and two Bathrooms with Double Garage complete this well formed family home.



Width: 11.05m Depth: 26.40m

**Richard Adams**  
**HOMES** that last a lifetime

© Copyright Richard Adams Homes 2021

QBCC Licence No. 1042241