

THE DESTINY IV



Perspectives & Floor Plan are artists impressions only

 5 |
  2 |
  2

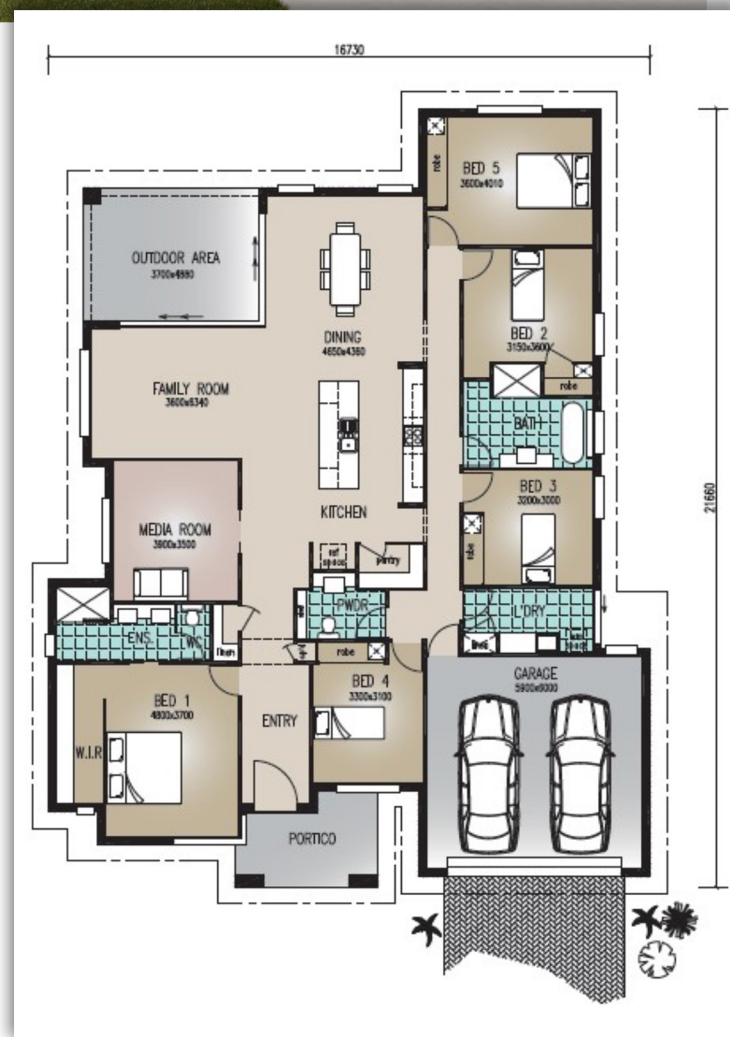
Home Features

Living Area	266.9m ²
Outdoor Area	18.1m ²
Portico Area	9.1m ²
Total Floor Area	294.1m²

Designer Notes:

Designed for the larger family, this home encompasses a sensible use of space, with the large open plan Living areas that have become popular. Its grand proportions and touches of luxury will give you a wonderful lifestyle, as well as maintaining its value over time.

Much attention has been given to how people actually 'live' in their homes – with its extensive Kitchen, luxurious Bathrooms and unique picture windows which bring light in for your family, this home is an exceptional example of modern design tailored to modern families.



Richard Adams

HOMES that last a lifetime

© Copyright Richard Adams Homes 2021

QBCC Licence No. 1042241