

THE CRIMSON



Perspectives & Floor Plan are artists impressions only

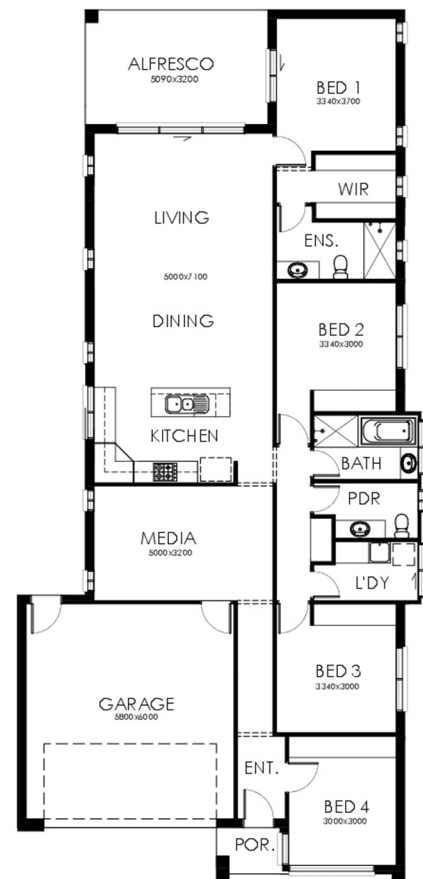
 4 |
  2 |
  2

Home Features

Living Area	206.04m ²
Porch Area	2.36m ²
Alfresco Area	16.28m ²
Total Floor Area	224.68m²

Designer Notes:

Designed for family functionality, this home features an open-plan Kitchen/Dining/Living that opens onto the 'Under Main Roof' Alfresco with a separate Media room for entertainment. The Master Suite boasts a Walk-in-Robe and Ensuite separate from the rest of the bedrooms, which are accessed from a separate hallway to the general living areas. Great for your narrow block, this will surely tick all your boxes.



Width: 10.80m Depth: 24.31m

Richard Adams
HOMES that last a lifetime

© Copyright Richard Adams Homes 2021

QBCC Licence No. 1042241