

THE AEGEAN



Perspectives & Floor Plan are artists impressions only



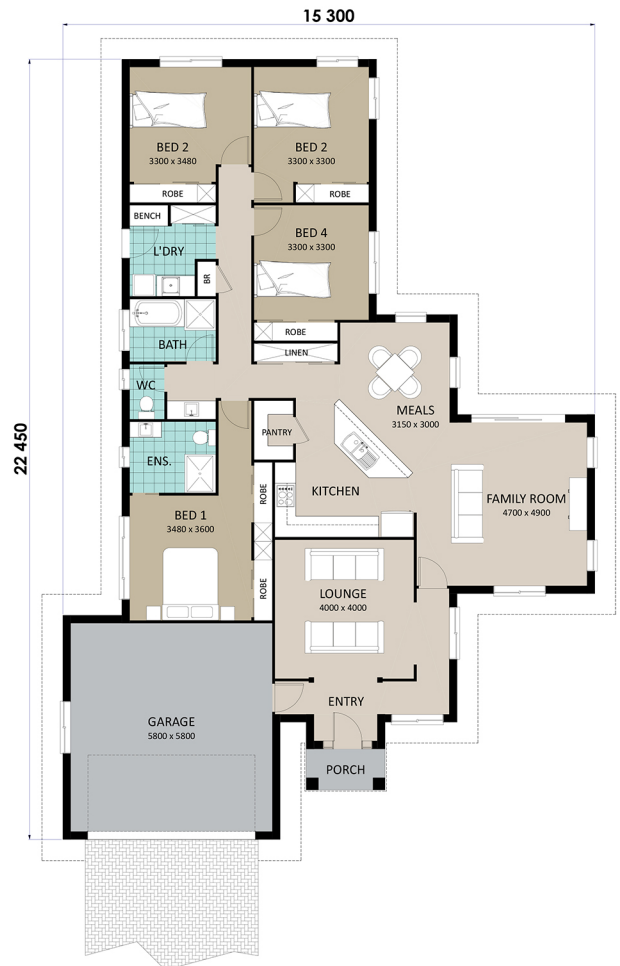
Home Features

Living Area	211.2m ²
Porch Area	3.0m ²
Total Floor Area	214.2m²

Designer Notes:

This is lovely home designed around the magnificent Kitchen, and has a delightful twist to the 'everyday' layout of many homes these days.

For something with a bit of style, try a sunken Lounge area, or leave it as is and just decorate the stylish Entry to your taste.



Richard Adams
HOMES that last a lifetime

© Copyright Richard Adams Homes 2021

QBCC Licence No. 1042241